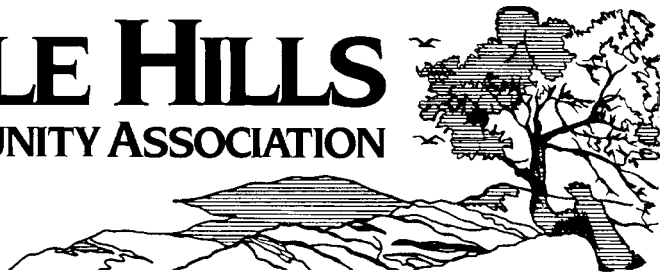


P. O. Box 4913  
Laguna Beach  
California 92652

www.lagunatemplehills.com

Winter-Spring 2012  
Volume 40  
Issue No. 1

# TEMPLE HILLS COMMUNITY ASSOCIATION



PRESORTED  
STD CLASS  
US POSTAGE  
PAID  
ANAHEIM, CA  
PERMIT NO. 514

TEMPLE HILLS COMMUNITY ASSOCIATION



## 40th Anniversary Gala!!

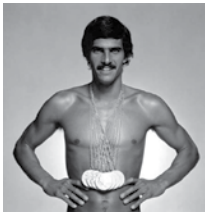


### Where were you in '72? In Laguna Beach...

Legendary surfing film *Five Summer Stories* is released and local Laguna Beach band *Honk* writes and performs the soundtrack. Laguna Beach High School initiated girls team sport playoffs beginning with CIF Volleyball. Eiler Larsen was the Laguna Greeter on PCH near Forest Avenue. The *NewsPost* weekly newspaper has a hometown publisher. American Swimmer Mark Spitz won a record 7 gold medals in the Summer Olympics in Munich. We were rockin' to Don McClean's "Bye Bye Miss American Pie" and Elton John's "Crocodile Rock"; we watched *Dirty Harry*, *The Godfather*, *Fidler on the Roof*, *Cabaret* and *Clockwork Orange* at the movies; and the boob-tube was playing *Sesame Street*, *The Benny Hill Show*, *The Brady Bunch* and *Hawaii Five-O*. Digital watches and the first video game PONG were introduced. Dow Jones closed above 1000 for the first time in history...and right here, in our own backyards, a few of us (actually about 50 of us) got together to form The Temple Hills Community Association.

### 40 Years later...

Temple Hills Community Association is turning 40!  
Join us to Celebrate THCA's 40<sup>th</sup> Birthday!



Saturday, June 2, 2012

Graciously Hosted and Catered by Jock Stalker & Ron Dier  
2285 Temple Hills Drive, Laguna Beach



RSVPs Required • Tickets \$40 per person  
Evites forthcoming • Add \$20 for annual dues

Call or email Rhonda (949) 376-9270 • rhondasworld@cox.net

# Successful Annual Party!

It was a cold evening but a beautiful setting and delicious food and drink. Thank you Dave and Joanne Trotter for letting us be with you in your lovely home, and thank you Rhonda and Doug Kinn for your fantastic pulling it all together. And to Robin Walker for coordination. And Fran Chilcote and Lorna Shaw for handling the registration. ☺

**In recognition of these women who have organized past THCA annual parties!**



**Vickie Novak and Jenny Radisay**



**Rhonda Kinn and Mary Lou Teschner**

## By-Laws Revision

THCA began in late 1972 but did not incorporate until 1975. Since that time the state of California has revised its requirements for incorporation. With this in mind, the Board of Directors, with the assistance of attorney Doug Landrum, has updated and approved updated by-laws that should be available soon on the website [lagunatemplehills.com](http://lagunatemplehills.com). ☺

December 3, 2011

# Temple Hills Community Association 39th Annual Meeting

## ANNUAL REPORT

Since our October 16, 2010, annual meeting, attended by roughly 75 persons, our business has been conducted mostly by Internet, with a series of meetings led by Lou Novack and his Pathways Committee that has been active throughout the year. Their activity has included a presentation before the City Council and the Water Board and participation in a City-sponsored information meeting in October. We have distributed four newsletters (Fall 2010, Winter-Spring 2011, Summer 2011, and Fall 2011). Our party committee has met to organize details for today's event, chaired by Rhonda Kinn, with help from Robin Walker and others. Several of us represent THCA in meetings of the Laguna Coalition where we have discussed our support for the open-space initiative and upgrading of Temple Hills pathways. Our principal concerns include preservation of open spaces in the Inner Greenbelt, especially Park Canyon and Rimrock Canyon. We continue to work on conservation of open-space lands. We coordinate with other neighborhood associations in support of issues that have citywide implication such as mansionization and remodels that block neighbor views. We supported efforts to establish a marine reserve, now implemented. We collaborated with TOWNA and SLCA in a candidates forum on October 20, 2010, at City Hall. We work with the City to eradicate invasive plants in our canyons and hillsides.

Thanks especially to each member of the steering committee for carrying on with their tasks related to neighborhood liaison, land use, open space, correspondence, newsletter, distribution, City issues, and annual party.

— Ron Chilcote for the Steering Committee

## MINUTES

Temple Hills Community Association 39<sup>th</sup> Annual Meeting, December 3, 2011, at the home of Dave and Joanne Trotter, 709 Canyon View Dr., was called to order at 4:30 p.m. by Carol Olsen.

Approval of the minutes of the October 16<sup>th</sup> 2010 Annual Meeting.

Presentation by John Walker and approval of the 2012 budget.

Presentation by Ron Chilcote of the Annual Report.

Nomination by Jim Hall of the Steering Committee (23 persons) and their election to the Board of Directors. Carried (19 yes, 4 nay and 2 abstain): Tim Black, Bob Borthwick, Fran Chilcote, Ron Chilcote, Jamie Crawford, Stephen Crawford, Anne Frank, Doug Kinn, Rhonda Kinn, Charlotte Masarik, Lou Novak, Vicky Novak, Pat O'Brien, Carol Olson, David Raber, Jennifer Radisay, Chris Reed, Lorna Shaw, Dave Walker, John Walker, Robin Walker, Caroline Wright, Dorothea Yellot.

Charlotte Maserik recognized the service of honorary members of the steering Committee: Joe Baker, Jan Hall, Jim Hall, Becky Jones, Ben Teschner, Mary Lou Teschner, Kurt Topic, Grant Wetzel and Marion Whitney.

Presentation by Sean McCracken on Transition Laguna.

Thanks from Mayor Toni Iseman and Councilwoman Verna Rollinger. Introduction of Jane Egly, Councilwoman.

Adjourned 5 p.m.

— Respectfully submitted, Chris Reed ☺

## Temple Hills' 'Walk Score'

Residents have questioned whether improving public paths would enhance property values. One website that addresses this question is <http://www.walkscore.com>. According to their research...

- **Walkable neighborhoods** offer surprising benefits to the environment, our health, our finances, and our communities.
- **Environment:** Cars are a leading cause of climate change. Your feet are zero-pollution transportation machines.
- **Health:** The average resident of a walkable neighborhood weighs 6-10 pounds less than someone who lives in a sprawling neighborhood." (For data confirming this, please see [http://switchboard.nrdc.org/blogs/kbenfield/utah\\_study\\_links\\_walkable\\_neigh.html](http://switchboard.nrdc.org/blogs/kbenfield/utah_study_links_walkable_neigh.html) and/or <http://unews.utah.edu/old/p/072808-1.html>.)
- **Finances:** One point of Walk Score is worth up to \$3,000 of value for your property." (The research behind this statement may be found in [WalkingtheWalk\\_CEOsforCities.pdf](http://WalkingtheWalk_CEOsforCities.pdf).)
- **Communities:** Studies show that for every 10 minutes a person spends in a daily car commute, time spent in community activities falls by 10%." (Referenced here and available on line, Cascadia Scorecard by Sightline Institute.)

Currently, Lower Temple Hills has a relatively low "walk score" and is generally considered "car dependent." Acknowledging existing pedestrian paths in the neighborhood might well improve this score and potentially enhance home values.

— Dorothea Yellott ☺



### Steering Committee 2012

- Tim Black.....Legal and Group 1
- Bob Borthwick.....Planning
- Fran Chilcote.....Corresponding Sec.
- Ron Chilcote.....Newsletter
- Jamie & Stephen Crawford.....School Issues
- Anne Frank.....Archive/Historian, Group 6
- Doug & Rhonda Kinn....Block Socials & Party Com
- Charlotte Masarik.....Village issues
- Lou Novak.....Evacuation Plan & Pathways
- Vicky Novak.....Pathways
- Pat O'Brien.....Minutes
- Carol Olson.....Walkways
- David Raber.....Pathways & web site
- Jennifer Radisay.....Party Committee
- Chris Reed.....Invasive plants & Minutes
- Lorna Shaw.....Group 2 & web site
- Dave Walker.....Group 3
- John Walker.....Treasurer
- Robin Walker.....Design Review & Party Com
- Dorothea Yellott.....Pathways

#### Honorary Members

Recognized for long-term service and commitment to Temple Hills

- Joe Baker
- Jan Hall
- Jim Hall
- Becky Jones
- Ben Teschner
- Mary Lou Teschner
- Kurt Topik
- Estelle Warner
- Grant Wetzel
- Marian Whitney

#### Liaison

- Ed Drollinger.....Mystic Hills
- Jeanette Merrilees.....North Laguna

#### The Coordinating Committee

Comprised of those with major responsibilities who may meet on an emergency basis.

#### Neighborhood Groups

Temple Hills is broken into six neighborhood areas. Group Leaders focus on issues and problems if and when they occur.

## Honorary Members of the Steering Committee

The past three years we have honored the work of people involved in the community who have had an impact on Temple Hills and Laguna Beach. In 2009, we honored Stu Saffer of Stu's News, and in 2010 longtime City Manager Ken Frank. In 2011, we recognized Temple Hills people who have served the association and community with distinction. In our newsletter masthead, we now recognize them along with Estelle Warner, a founder of the association and for many years a co-coordinator.

*Recognized for long-term service and commitment to Temple Hills:*

**Joe Baker.** For his efforts in organizing Neighborhood Watch, chairing a neighborhood group, and proposing an evacuation plan for Temple Hills.

**Jan Hall.** For many years as a founder of the association and work in maintaining contact with new residents and letting them know we are available to help when problems arise.

**Jim Hall.** For a dedicated founder of the association and over the years active on the Steering Committee, committed to enhancing and making our community and Laguna Beach a better place.

**Becky Jones.** For many years as coordinator and representing Temple Hills for nine years as a planning commissioner and for helping neighbors understand how to deal with planning issues and problems.

**Ben Teschner.** For many years of service, including treasurer and organizing and chairing annual meetings, working on view and other problems on the hill.

**Mary Lou Teschner.** For many years of service, including organizing a half-dozen annual parties on behalf of the association.

**Kurt Topic.** For many years as chair of the Group 3 Neighborhood Group in the lower part of the hill.

**Grant Wetzel.** For his 35 plus years of monitoring open space, especially off Thurston Drive and above Park Avenue.

**Marian Whitney.** For a founder of the association who for many years coordinated hand distribution of the newsletter to the doors of neighbors and who continues to assist in follow-up appeals to membership.

Approved by the Steering Committee, December 1, 2011. Presented by Charlotte Maserik at the Annual Meeting. ♡

## The Laguna Wilderness: Images and Impressions

Ron Chilcote's exhibit of photography comprises roughly 60 of his chromogenic prints and Polaroid impressions in the Laguna Wilderness with emphasis on the hills, the canyons and the waters of an area extending from Aliso and Wood Canyons to Laurel and Little Sycamore Canyons. The show is inspired by his many years working on conservation through the Laguna Greenbelt and its founder, Jim Dille. It depicts the story of an effort to conserve public lands as open space. See ronchilcotephotography.com and his Nature's Laguna Wilderness published by Laguna Wilderness Press and the show at beautiful Founders Hall Art Gallery, 2<sup>nd</sup> floor, Soka University of America. Monday to Friday, 9 a.m. to 5 p.m., January 19 to May 10, 2012. ♡



### THCA'S 40<sup>TH</sup> BIRTHDAY!

Annual Meeting 4 p.m. and  
Party 5:30 p.m., Saturday, June 2, 2012

2285 Temple Hills Drive

RSVPs Required • Tickets \$40 per person

Call or email Rhonda (949) 376-9270

rhondasworld@cox.net (Details on page 1!)

## THCA Budget 2012

### Financial Report

|                                      |                   |
|--------------------------------------|-------------------|
| <b>INCOME Nov 2010-Dec. 3, 2011</b>  |                   |
| Membership/dues .....                | \$3,895.00        |
| Newsletter/Advertising.....          | \$260.00          |
| Fundraising/Annual Party .....       | \$390.00          |
| <b>TOTAL INCOME .....</b>            | <b>\$4,545.00</b> |
| <b>EXPENSES Nov 2010-Dec 3, 2011</b> |                   |
| Printing/Graphics.....               | \$1,788.78        |
| Postage.....                         | \$568.73          |
| TOW Association Dues.....            | \$15.00           |
| P.O. Box .....                       | \$42.00           |
| Bank Fees .....                      | \$25.00           |
| Annual Party (2011).....             | \$1,110.00        |
| Annual Party (2010).....             | \$1,665.60        |
| <b>TOTAL EXPENSES .....</b>          | <b>\$5,215.11</b> |

|   |                   |
|---|-------------------|
| 2010 BALANCE FORWARD .....                  | \$6,606.62        |
| 2011 INCOME .....                           | \$4,545.00        |
| 2011 EXPENSES .....                         | \$5,215.11        |
| <b>BALANCE TO DATE (DEC. 3, 2011) .....</b> | <b>\$5,936.51</b> |

#### Income

|                           |                   |
|---------------------------|-------------------|
| Dues .....                | \$3,000.00        |
| Advertising.....          | \$300.00          |
| Annual Party.....         | \$1,500.00        |
| <b>Total Income .....</b> | <b>\$4,800.00</b> |

#### Expenses

|                             |                   |
|-----------------------------|-------------------|
| Printing .....              | \$1,500.00        |
| Postage.....                | \$700.00          |
| P.O. Box .....              | \$40.00           |
| Annual Party.....           | \$1,600.00        |
| Miscellaneous.....          | \$200.00          |
| Reserve .....               | \$760.00          |
| <b>Total Expenses .....</b> | <b>\$4,800.00</b> |

— John Walker, Treasurer



Photo: Daniel Woolfolk

## San Onofre Nuclear Generating Station

Marion Pack was the speaker at the monthly meeting of the Laguna Canyon Conservancy. She spoke about the history of nuclear power, talked about Fukushima and then went into the background of San Onofre, the evacuation area plan, earthquake and current problems with shut-down reactors, radiation leaks, corroding rods, irradiated spent fuel, etc. She talked about San Clemente Green and Laguna Beach supporting San Clemente's plea to the Nuclear Regulatory Commission to require that San Onofre (Edison) remove all irradiated spent fuel from its site, and if this is not done then to insist that NRC does not reissue any future licensing for San Onofre.

Her hope is that all cities in the 50-mile area (and beyond) will eventually sign on to this, and she is currently working on Irvine. Some 8.2 million people live within this area.

For further information, see <http://lagunabeach.patch.com/articles/operators-shut-down-san-onofre-one-reactor-unit-as-a-precaution>

— Charlotte Masarik

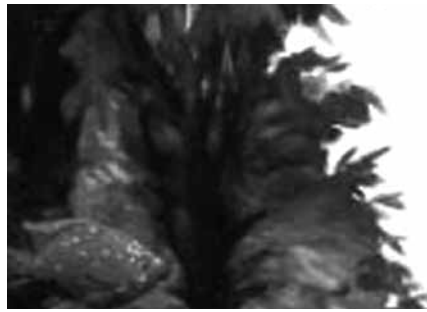
## Connect the Coast to the Cleveland National Forest

[THCA has submitted a letter to the federal government asking it to honor the 1996 Coastal agreement to protect a thousand acres designated for the protection of wildlife, plan and habitat.]

Dubbed the 21<sup>st</sup> century's great metropolitan park, the Great Park in Central Orange County comprises important lands and the last remaining viable opportunity to connect the 20,000 acres of protected natural lands in the Laguna Coast to the more than 150,000 acres of the Cleveland National Forest and the Santa Ana Mountain foothills. The most recent endeavor focuses on the Great Park connection — a wildlife movement corridor connecting the Coast to the Cleveland.

Though the Great Park itself is protected, there are still some tenuous wildlife linkages that remain at risk. The most significant and urgent connection is northeast of the Great Park. Known as the Federal Aviation Administration (FAA) property, this land was originally designated as the El Toro National Wildlife Refuge and incorporated in a state and national designation as part of an adopted habitat reserve (called an NCCP/HCP). The Federal Bureau of Investigation (FBI) wishes to convert the uses of the FAA site to a tactical training facility, and it has developed an environmental document that portends no negative environmental effect from this transfer of ownership and new use. We believe differently.

The state and national designations have a list of permitted uses that allow for the restoration of habitat, passive recreation, and excludes development of new facilities including those proposed by the FBI. Numerous environmental organizations support the preservation of the Coast to the Cleveland Connection and allowing appropriate uses on the FAA site. The City of Irvine has taken the lead on commenting on the importance of maintaining the use of these lands consistently as the reserve system designation. To not abide by these uses would be a blatant violation of a federal commitment made in 1996.



## Third Annual KelpFest

Laguna Beach's kelp forest, which declined as much as 80 percent the past 20 years is back, and the Kelp Fest is an annual celebration of its return. More than 800 species rely on this critical habitat. This year's event will take place at Main Beach from 9 a.m. to 5 p.m. on Saturday, April 21, and include music, dancing and displays on how kelp is used in our everyday life. For more information, see <http://www.kelpfest.org>

**PLUMBING**  
Over 50 Years in Laguna Beach  
**Andrus Plumbing & Air Conditioning, Inc.**

---

**494-8096**

License #249778  
855 Glenneyre Street, Laguna Beach  
Visit Our Retail Store

**JOE BAKER, D.M.D.**  
DENTISTRY

31655 Pacific Coast Highway  
Laguna Beach, CA 92677

Phone (949) 499-8155

**FIRESIDE**  
AT THE VILLAGE

Why deal with strangers when you can rent from neighbors? We have cozy, upscale 1-3-bdrm condos in The Village at Mammoth Lakes  
[www.viewgetaways.com](http://www.viewgetaways.com)  
Chris and/or Tracy • 949-887-2423

**MCLELLAN**  
financial

Residential Lending for Primary Residence, Vacation Homes, Construction Financing and Limited Documentation Financing options for Temple Hills Home Owners

Integrity. Service. Excellence

Darren Mclellan  
1397 Terrace Way Laguna Beach, CA 92651  
TEL: 949.933.9282 NMLS: 297075

[facebook.com/mclellanfinancial](https://www.facebook.com/mclellanfinancial) [twitter.com/darrenmclellan](https://twitter.com/darrenmclellan)

**The Stand**  
238 Thalia St.

**8 Homemade Soups**

**FREE Samples**

**Lots of Parking**

*Marion H. Jacobs, Ph.D.*

CLINICAL PSYCHOLOGY  
CA LIC. #PSY 4150

[marionjacobs@cox.net](mailto:marionjacobs@cox.net)  
[www.take-chargeliving.com](http://www.take-chargeliving.com)

2060 Temple Hills Drive  
Laguna Beach, CA 92651  
(949) 497-4708